

Land Rover Defender – Upper Grille Kit

(GKLRD07-Upr-B)

EN - Fitting Instructions

FR - Instructions de Montage

DE - Montageanleitung



Tools Required / Outilsage / Benötigte Werkzeuge:

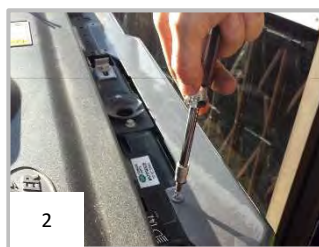


Grille Installation / Installation de la Calandre / Montage Kühlergrill:

EN - Remove the existing radiator mould, first by the side screws (1), then remove the top screws under the bonnet (2). Remove the original grille then guide the Lazer grille into the moulding (3), and align the screw holes (4). Fix the centre screws using the nuts and washers supplied (5) before tightening the remaining screws (6). Attach the original moulding back to the vehicle.

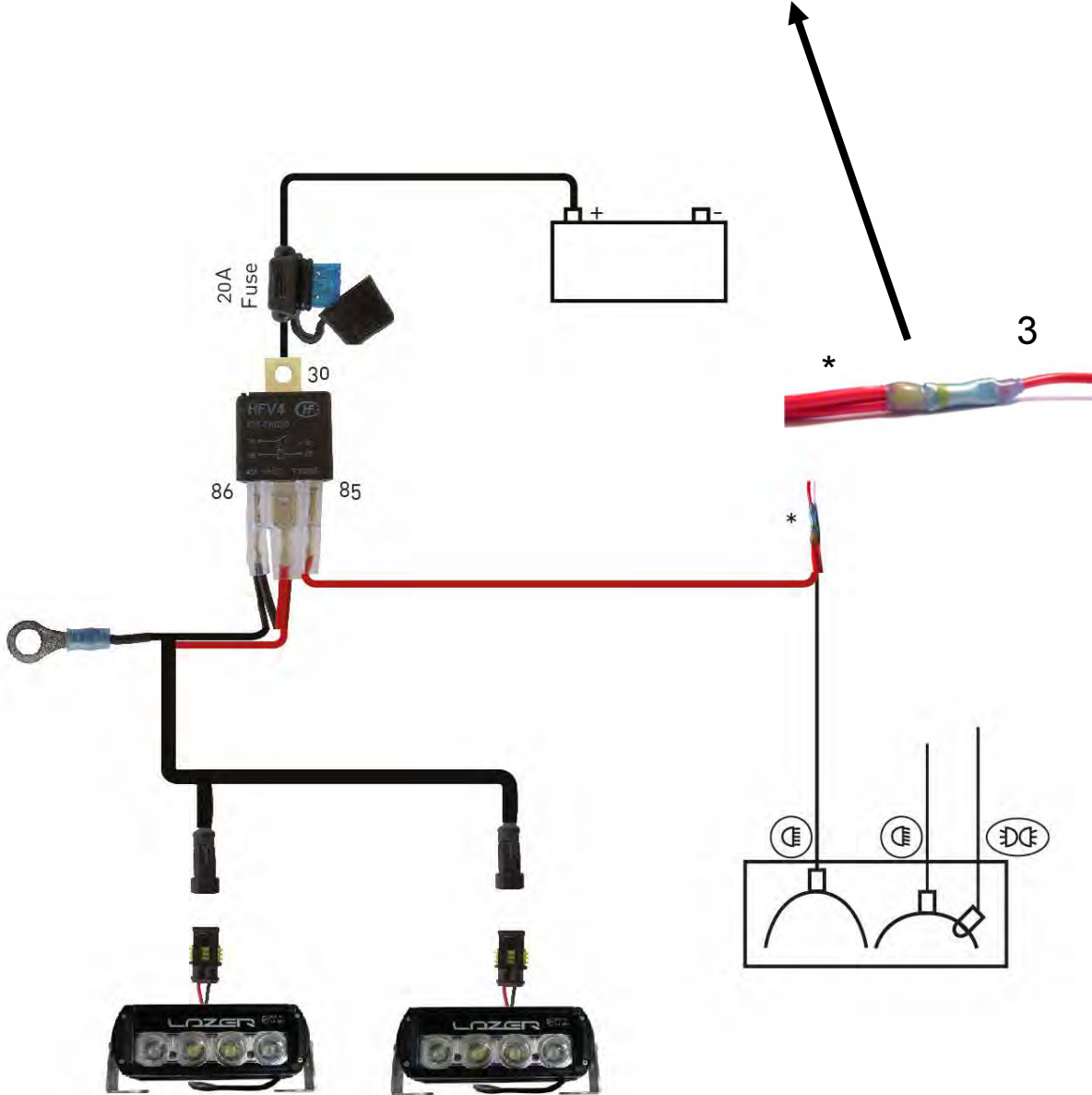
FR - Enlever le guide radiateur, d'abord par les vis de côté (1), puis les vis superieures sous le capôt moteur (2). Enlever la calandre d'origine, guider la calandre Lazer en place (3) et aligner ceci avec les trous (4). Fixer les vis centrales avec ecrous et rondelles fournis (5). Avant de fixer les autres vis remettez le guide en place (6).

DE - Entfernen Sie den Kühlergrill. Hierzu zunächst die Schrauben an den Seiten (1), dann die oberen Schrauben unter der Motorhaube entfernen (2). Anschließend den Original-Einsatz herausnehmen, den Lazer-Grill einfügen (3) und an den Bohrungen ausrichten (4). Zunächst die Schrauben in der Mitte einsetzen und anziehen (5), dann die restlichen (6). Montieren Sie den kompletten Kühlergrill wieder am Fahrzeug.



For electrical wiring see separate instructions / Veuillez voir instructions spécifiques pour installation électrique / Für den elektrischen Anschluss siehe getrennte Anleitung.

Electrical wiring / Instructions spécifiques pour installation électrique / Für den elektrischen Anschluss



Thank you for choosing a Lazer Lamps and Zunsport product.

Merci pour choisir un produit de Lazer Lamps et Zunsport.

Vielen Dank dafür, dass Sie sich für ein Produkt von Lazer Lamps und Zunsport entschieden haben.

Lazer Lamps Grille Kit – Light Fitting Instructions

(For all Zunsport manufactured stainless steel mesh grilles)



Step 1

Remove the circular Lazer badges from each side of the lamps, then lay the lamps on a flat surface (lens pointing down).

Step 2

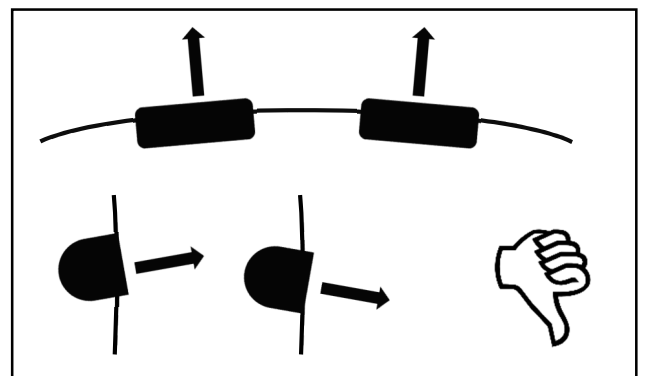
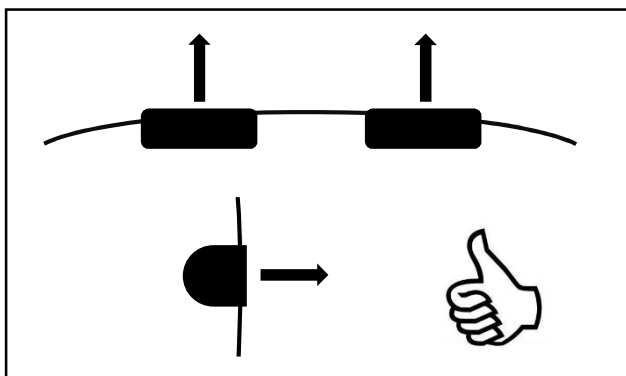
With the brackets and fittings pointed up, lay the grille down on top of the lights feeding the lamp cables and lamps through the grille apertures.

Step 3

Insert the 7mm Nylon Spacers (supplied) into the sides of the lamps as they align with the grille brackets. Support the natural curve of the grille.

Step 4

Starting with the inside edges first secure the lamps to the brackets using the M6 bolts, nuts, and washers supplied. Take care when tightening that the angle and orientation of the lights is such that the lights remain pointing directly forward.



Step 5

Before supplying finished product, ensure the 'grille kit' package includes:

- Grille plus lights
- Screws supplied with grille for securing to vehicle moulding during installation
- Fitting instruction sheet specific to each grille kit
- x1 Two-lamp ST or RS harness kit, depending on lights installed (product codes: 8225-12V-SP (ST4), or 8203-12V-SP (RS4))

Thank you for choosing a Lazer Lamps and Zunsport product.