
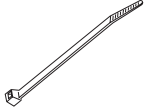
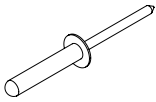
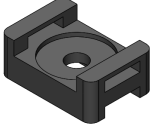


SLV FORD RANGER PREMIUM FITTING INSTRUCTIONS

KIT NUMBER
10055798 - Standard
10055961 - Raptor/AdBlue
 Approx Fit Time: 30 mins

READ INSTRUCTIONS CAREFULLY BEFORE COMMENCING THIS ACTIVITY.

Kit Contents- Hardware

No.	Item Description	Quantity	Image	Service Part Number
1	Central Locking Vehicle Loom	1		10055663 - Standard or 10055833 - Raptor & AdBlue
2	Braided Sleeve	1		10055265
3	Reusable Cable Tie	1		10055284
4	Rivet	1		10000089
5	M5 Washer	1		10052603
6	Rivet Cable Tie Mount	1		10055285
7	Cable Tie 165mm	2		10053437

SLV FORD RANGER PREMIUM FITTING INSTRUCTIONS

KIT NUMBER
10055798 - Standard
10055961 - Raptor/AdBlue

Tools Required

Phillips screwdriver set	Rivet gun	
Cleaning rags	Drill bit 5mm	
Power drill		
Metric ruler		

General Note

- Read through the fitting instructions before installation of accessory.
- Always install the accessory following the fitting instructions. Failure to do so may cause damage to the vehicle or the accessory and void product warranty.
- Ensure all recyclable discarded vehicle/accessory components and packaging are recycled following local recycling regulations.
- It is always recommended that this accessory is fitted by a qualified Technician.
- Safely store and protect any removed vehicle components.
- Ensure all bare metal surfaces are protected using Automotive Bare Metal Primer and touch-up paint.
- Remove all metal swarf and dust from all vehicle surfaces if surface is used for accessory installation.
- Ensure all fasteners are torqued to the specifications as per instruction.
- Apply any adhesives to the vehicle only when the surface temperature is between 20°C to 40°C.

Safety Notes

- Check that all work practises comply with safety standards.
- Appropriate clothing & PPE must be worn.
- While using power tools ensure safe procedures are followed.

SLV FORD RANGER PREMIUM FITTING INSTRUCTIONS

KIT NUMBER
10055798 - Standard
10055961 - Raptor/AdBlue

Step 1

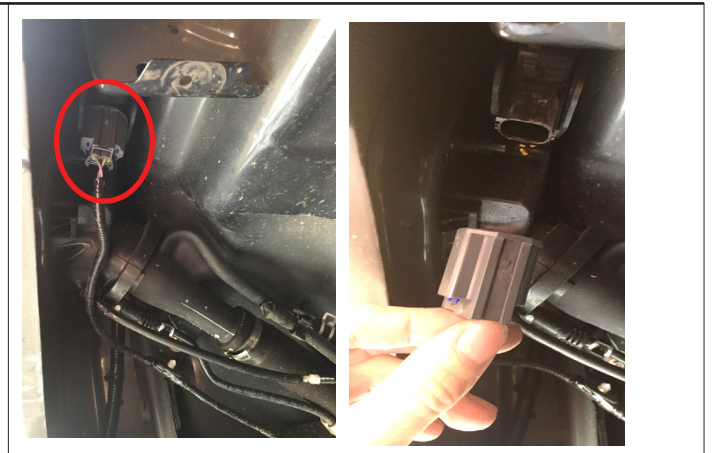
- Remove the LH rear wheel arch liner.



Step 2

- Locate and unplug the fuel filler door central locking module.

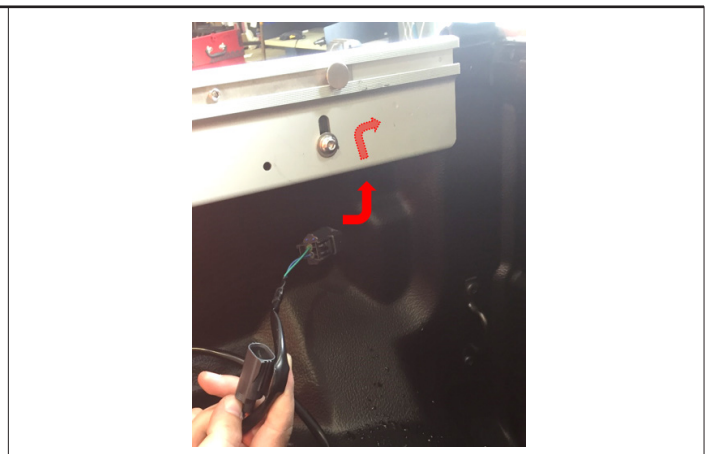
Note: If vehicle is a Raptor or has AdBlue equipped, plugs will look like this. →



Step 3

- Feed the two large plugs of the vehicle loom (item 1) under the vehicle connector rail (VCR) and up through the front LH corner of the tub.

Note: If vehicle is a Raptor or has AdBlue equipped, plugs will look like this. →



SLV FORD RANGER PREMIUM FITTING INSTRUCTIONS

KIT NUMBER
10055798 - Standard
10055961 - Raptor/AdBlue

Step 4

- Feed loom through until approx 200mm remains in the deck.
- Ensure plugs are now visible under the wheel arch.



Step 5

- Patch the loom into the plugset that was disconnected in step 2



Step 6

- Cable tie (item 7) excess wiring loom in a bundle below the main fuel filler pipe.

Note: Take care not to restrict any fuel lines.



SLV FORD RANGER PREMIUM FITTING INSTRUCTIONS

KIT NUMBER
10055798 - Standard
10055961 - Raptor/AdBlue

Step 7

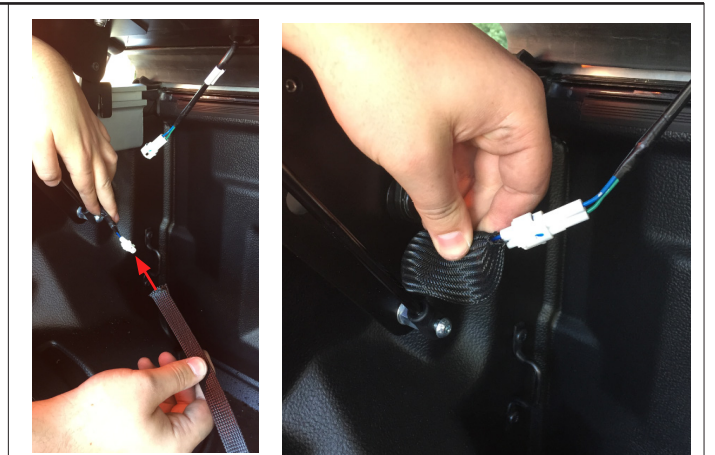
- Refit wheel arch liner removed in step 1.



Step 8

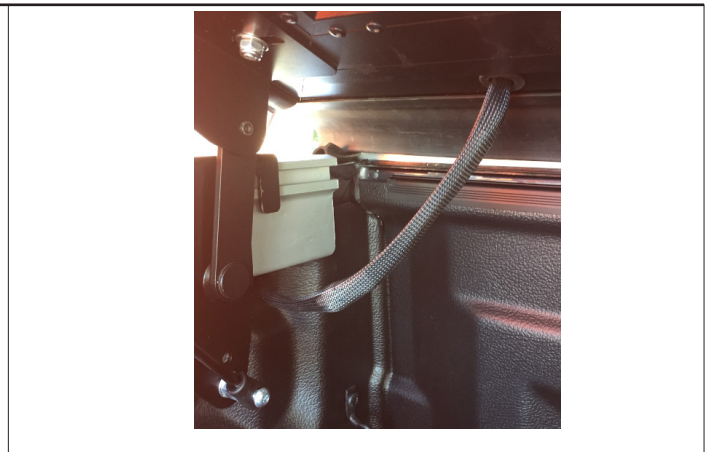
With SPORTLID V on vehicle.

- Slide braided sleeve (item 2) over the exposed vehicle central locking loom and plug into the SPORTLID V loom.



Step 9

- Allow braided sleeve to cover entire length of exposed loom. Secure in place with electrical tape at the highest point if desired.



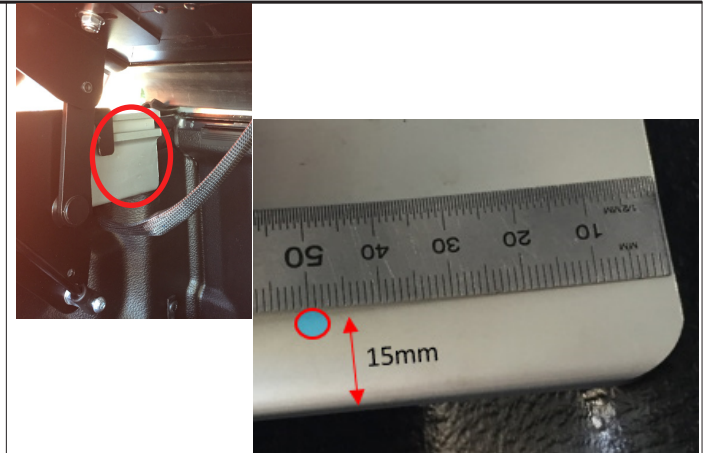
SLV FORD RANGER PREMIUM FITTING INSTRUCTIONS

KIT NUMBER
10055798 - Standard
10055961 - Raptor/AdBlue

Step 10

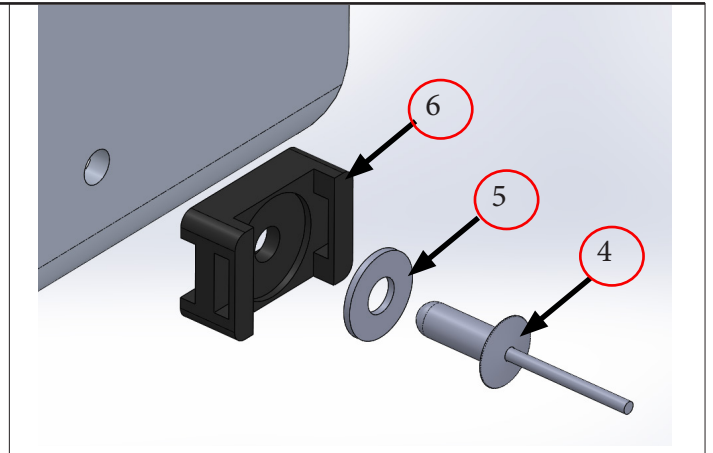
- Drill a 5mm hole in the LH Vehicle Connector Rail (VCR) at the location shown.

(15mm up from bottom edge, 50mm in from leading edge)



Step 11

- Rivet (item 4) the cable tie mount (item 6) and washer (item 5) to the drilled hole as shown.



Step 12

- Using the reusable cable tie (item 3) LOOSELY fasten wiring loom to the mount.

Note: The loom must be able to slide through the cable tie as the SPORTLID V is opened and closed.

SPORTLID V Premium
fitment now complete.

