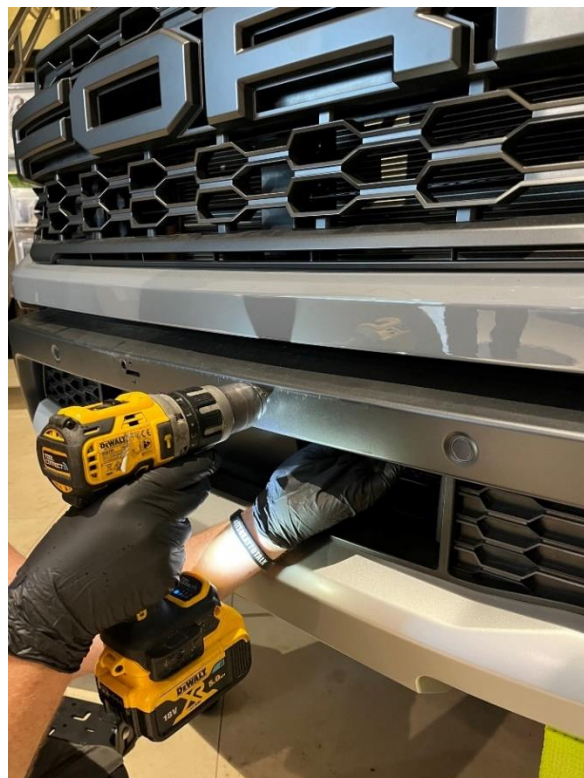


WR45-FITTINGKIT Guide

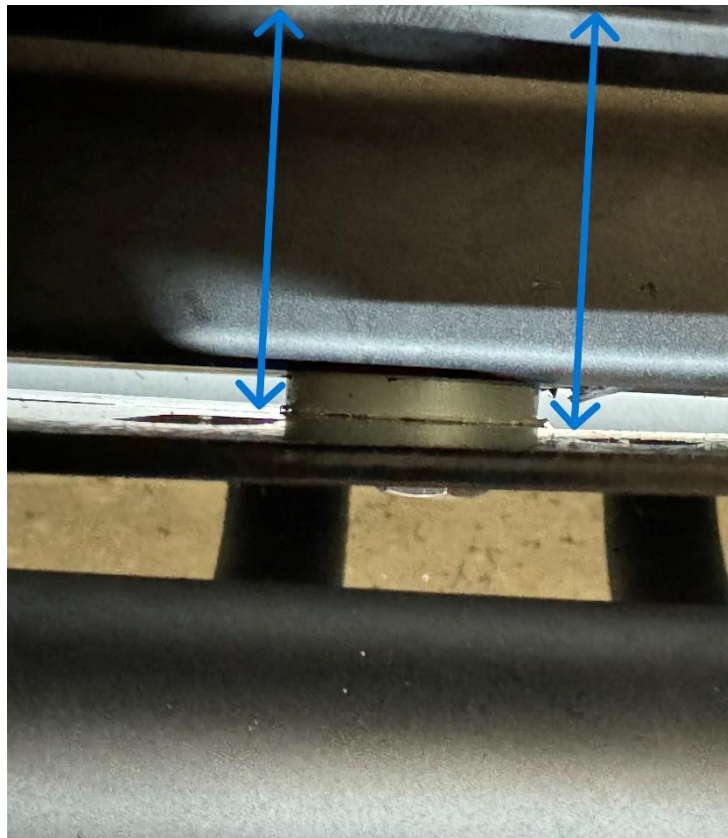
- Ensuring mounting bracket is no lower the top of the lower opening, (marked in red below) mark the locations for mounting the bracket, it is recommended to use the holes arrowed in blue. - Caution – do NOT cover crash collision radar.
Note – a cut out has now been added for the radar to bracket therefore the bracket you receive may look slightly different



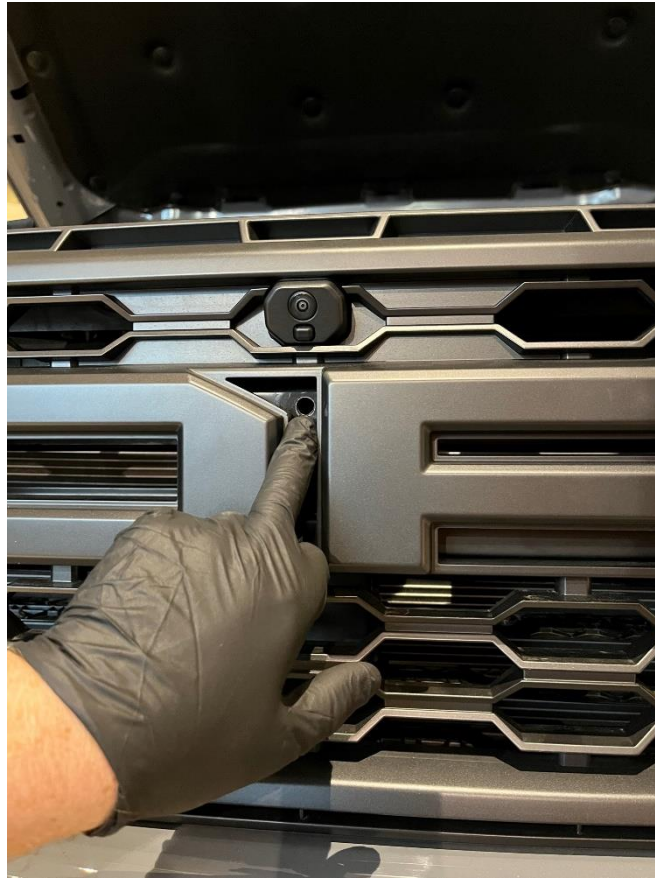
- Drill 8mm holes through bumper and right through including the metal plate that is at the rear of bumper, but being cautious as to not drill into radiator. Holes are also required to allow for the plastic spacers to slot through, these are 32mm & only required to be cut through the front plastic part of bumper, & not the metal plate at the rear.



- The plastic spacers fit behind & up tight against the back of the mounting bracket, slide through the bumper via holes that need to be drilled with a 32mm hole cutter. The bolts indicated below go through the centre of the spacer. The blue arrows indicates where the spacer slides through the bumper.



A hole needs to be drilled for fitment of the centre stay bar, drill an 8mm hole in the centre of the grille, and just below the front camera as shown;



Remove the plastic trim from the top of the grille and pull the top of the grille forward slightly. You will now be able to fit the stay bar and have access to secure in place from behind the grille.



Fit mounting bracket.



Before installing lights, tap the rear of one of the lights M6, (hole location shown below). This light is for the centre, and the tapped hole is for the stay bar.

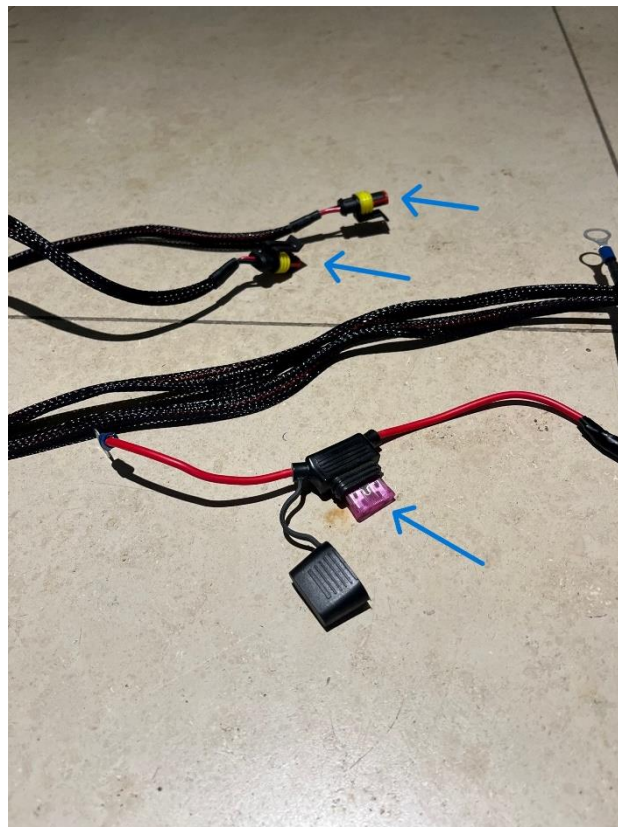


Instal the lights onto the mounting bracket using the fittings provided with the lights.

Note – the penny washer arrowed red below is provided in the WR45-FITTINGKIT

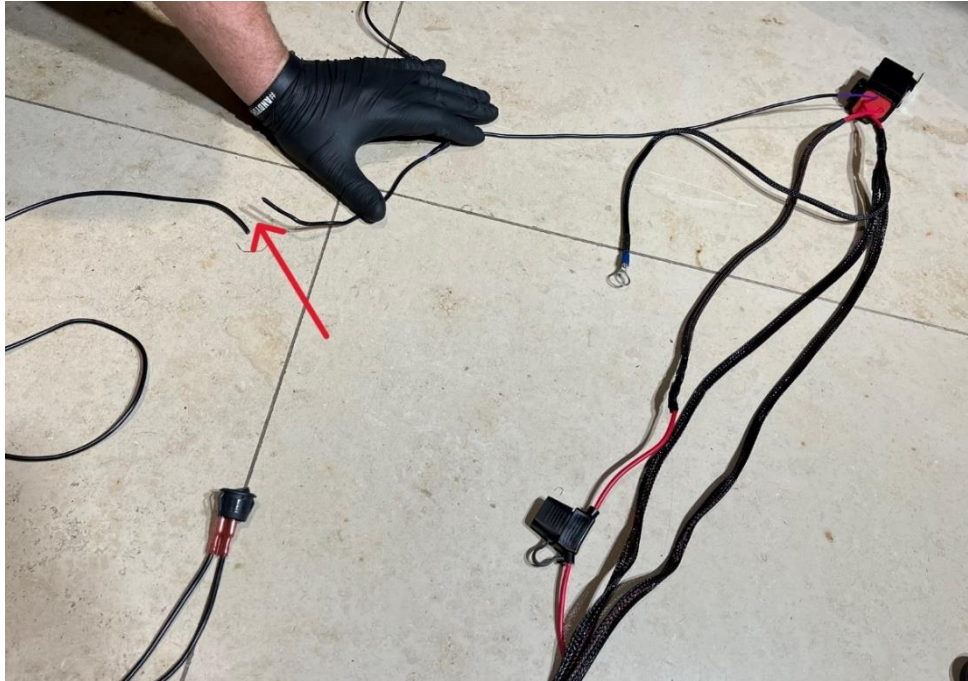


The fuse for the twin loom needs to be replaced with a 40A fuse.



Remove the switch from both looms by cutting both switch wires. (Leave a safe length on one)

Both switch wires on the loom need to be connected together so that they become one signal wire.



Connect the signal wire (what was switch wires) to the yellow wire located next to the auxiliary fuse box. This is auxiliary 6.

Fit lives & earths to battery and neatly route wiring to lights.

