

TOYOTA HILUX 2016- CENTRAL LOCK TAILGATE KIT

1) Please check you have all the required parts before starting installation:

- 1 x baseplate and actuator kit
- 1 x wiring loom
- 8-10 x cable ties
- 2 x scotch locks - please note that soldering is recommended
- 1 x convoluted tubing - to protect wiring harness

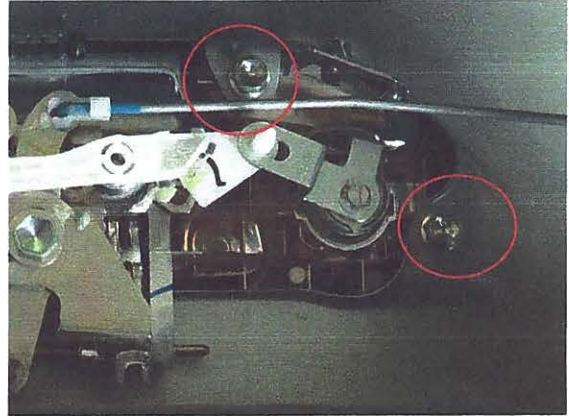
2) You will need the following tools:

- Screwdriver (to remove tailgate panel)
- Metric socket set (to remove tailgate handle)
- Soldering equipment
- Pliers (to crimp scotch lock wire connectors - *optional*)

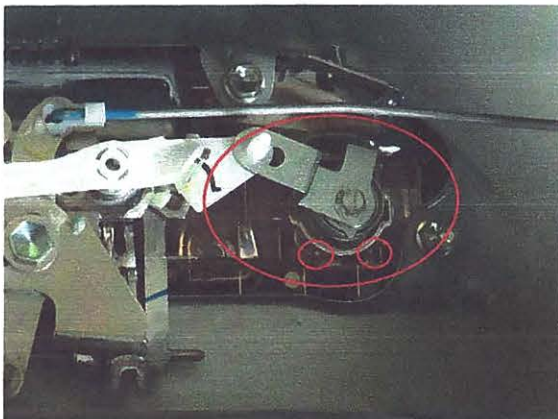
3) Open tailgate; undo 10 screws and remove metal panel to allow access into the inside of the tailgate



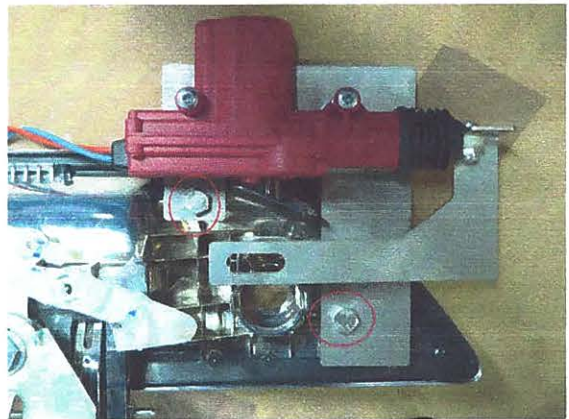
4) Remove the two bolts that hold the tailgate handle into the tailgate



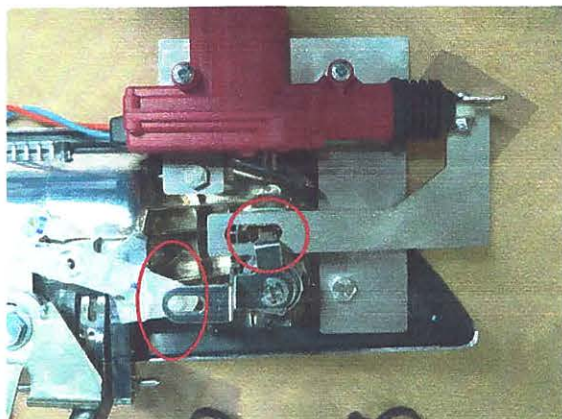
5) Remove key barrel lock by pressing the spring clip together and simply pull out



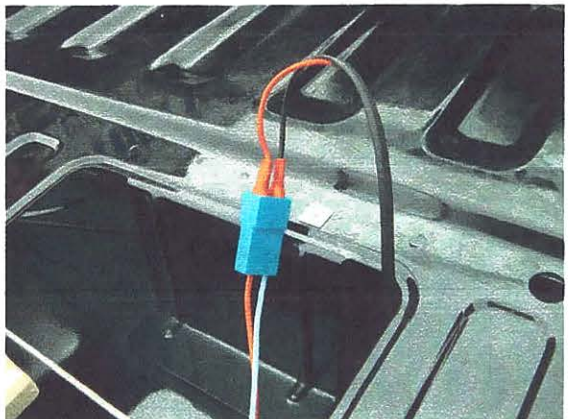
6) Mount the actuator and base plate re-using the bolts removed above



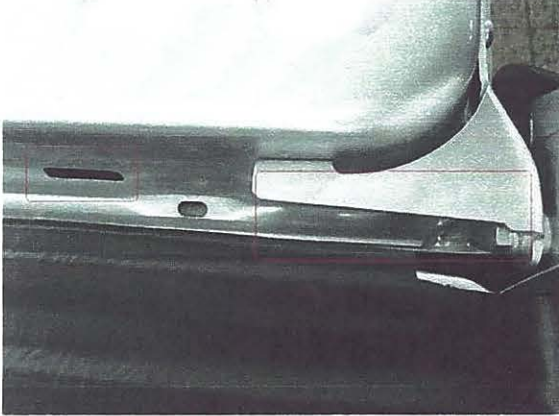
7) Refit key barrel by sliding it back into position ensuring that it slides through the Power Lock and on the truck's lock



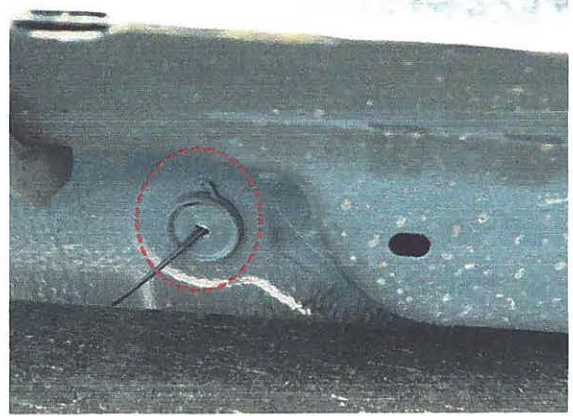
8) Connect wiring loom to actuator:
Red to Red and Black to Blue



8) Feed cable out of tailgate and underneath the truck body. Use the plastic convoluted tubing to protect the wire. Feed the cable to the driver's or passenger's front door area.



9) Locate a grommet under the front seat and punch a small hole through which to feed the cable into the cab area

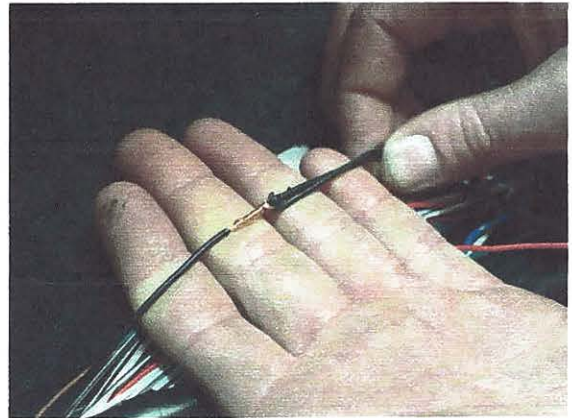
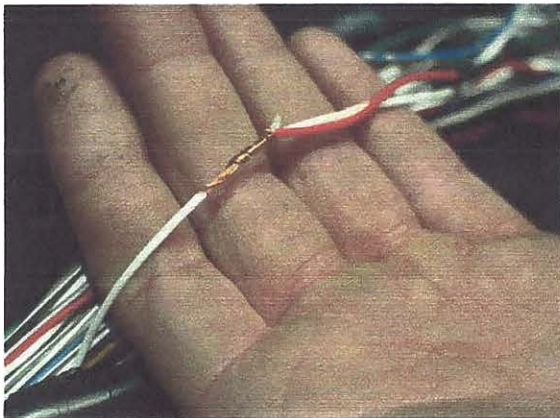


10) Pull up the door sill guard to locate the vehicle wiring loom and allow access to the Power Lock cable



11) Solder the wiring loom into vehicle electrics. You may use the Scotch Locks provided but soldering is recommended. Please note that we advise that any connection is appropriately and securely covered with suitable insulation material

Eagle1 Lock	Vehicle Loom
Red	White
Black	Black



12) Use an electrical tester if available. You should get a 12v flash reading when pressing the central locking. Test the kit by clicking the central locking and checking that the tailgate locks and unlocks. Do not click continuously since the motor may over heat and fail. If everything works, replace the tailgate cover.

Eagle4x4 recommends that installation is done by a qualified auto electrician. Any electrical faults due to improper installation will not be warranted by Eagle4x4